



# **SOUTH AUSTRALIAN ECONOMIC INDICATORS**

EMBARGO: 11:30AM (CANBERRA TIME) MON 2 DEC 2002

## **C O N T E N T S**

	<i>page</i>
Notes.....	2
REVIEW	
Overview .....	3
Selected features .....	4
TABLES	
List of tables .....	5
Statistical summary .....	6
State summary .....	8
State accounts .....	9
International trade .....	10
Consumption and investment .....	13
Production .....	15
Consumer price index .....	19
Labour force and demography .....	20
Average weekly earnings .....	23
Financial markets .....	24
ADDITIONAL INFORMATION	
Publications source index .....	25

- For further information about these and related statistics, contact Kirsten Hastwell on Adelaide 08 8237 7369, or the National Information and Referral Service on 1300 135 070.

## NOTES

### FORTHCOMING ISSUES

<i>ISSUE</i>	<i>RELEASE DATE</i>
January 2003	20 December 2002
February 2003	3 February 2003
March 2003	3 March 2003
April 2003	1 April 2003
May 2003	1 May 2003
June 2003	2 June 2003

### ABOUT THIS PUBLICATION

*South Australian Economic Indicators* is a monthly publication which contains the latest available data at the time of preparation for a range of statistical series that have been identified as indicators of economic activity in this State. In a number of cases the figures presented are preliminary and subject to revision in subsequent issues.

### CHANGES IN THIS ISSUE

Annual data for state accounts data are presented in tables 3 and 4. As the annual estimates have recently been updated and revised, and the quarterly estimates have not yet been updated to those annual benchmarks, some discrepancies exist between the annual and quarterly estimates presented in this publication. The revised quarterly figures are expected to be released in *Australian National Accounts: National Income, Expenditure and Product* (cat. no. 5206.0) on 4 December 2002.

### SYMBOLS AND OTHER USAGES

n.a.	not available
n.y.a.	not yet available
*	subject to sampling variability too high for most practical purposes
..	not applicable
0, 0.0	nil, or rounded to zero

### ROUNDING

Where figures have been rounded, discrepancies may occur between sums of the component items and totals.

### INFORMATION

All data are presented in original terms, unless otherwise stated. More detailed information on each series, including explanatory and technical notes, can be obtained from other Australian Bureau of Statistics publications or alternative data sources. To assist those seeking further information, the series presented in the statistical and state summaries provides a reference to the Publication Source Index which is at the end of this publication.

Ian Crettenden  
Regional Director  
South Australia

## OVERVIEW

The data in this Overview are presented in trend terms, unless otherwise stated.

### INTERNATIONAL TRADE

The value of South Australian merchandise exports in original terms for the month of September 2002 was \$757.1m. This was a decrease of 8.9% from the value for August 2002 and an increase of 1.3% on September 2001.

The value of South Australian merchandise imports in original terms for the month of September 2002 was \$475.2m. This was a decrease of 0.2% from the value for August 2002 and a decrease of 9.2% over September 2001.

### CONSUMPTION AND INVESTMENT

South Australia's retail turnover increased by 9.2% over the 12 months to September 2002. Retail turnover for September 2002 was \$1,084.7m.

There were 4,493 new motor vehicle sales in October 2002, an increase of 8.4% on October last year.

Private new capital expenditure in the June quarter 2002 was \$795m, an increase of 32.5% on the June quarter 2001.

### HOUSING

The number of dwelling units approved in September 2002 was 896, a rise of 0.3% on September 2001.

### CONSUMER PRICE INDEX

The Consumer Price Index (All Groups) for Adelaide increased by 0.9% to 140.3 in the September quarter 2002, and by 3.7% over the level recorded twelve months previously.

### LABOUR FORCE AND DEMOGRAPHY

The trend estimate of employed persons in South Australia has generally shown an upward trend since February 2001, reaching 694,500 in October 2002. This was 15,600 persons higher than the level of twelve months ago (678,900). The total number of persons employed full-time in South Australia was 478,000 in October 2002 compared with the October 2001 estimate of 473,400.

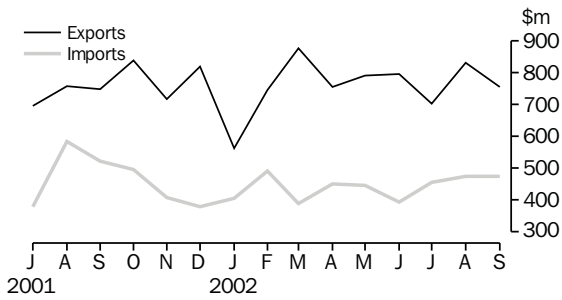
In October 2002, the trend estimate of the unemployment rate for South Australia was 6.4%. In the last twelve months, the rate has fallen by 8 percentage points from 7.2%. The trend estimate of the participation rate in South Australia was 60.7% in October 2002 compared with 60.2% in October 2001.

### FINANCIAL MARKETS

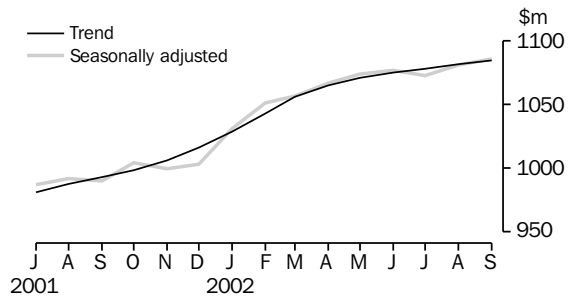
The value of secured housing finance commitments (excluding alterations and additions) was \$458m in September 2002. This was a 3.8% decrease on August 2002 and 10.6% increase on September 2001.

## SELECTED FEATURES

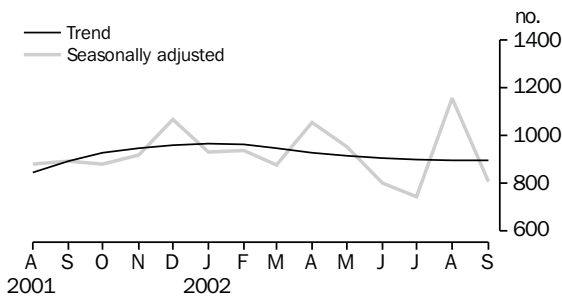
MERCHANDISE EXPORTS AND IMPORTS



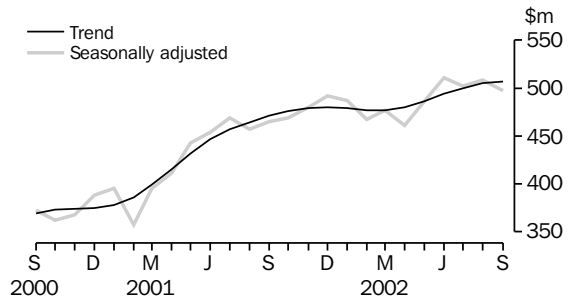
RETAIL TURNOVER



DWELLING UNITS APPROVED

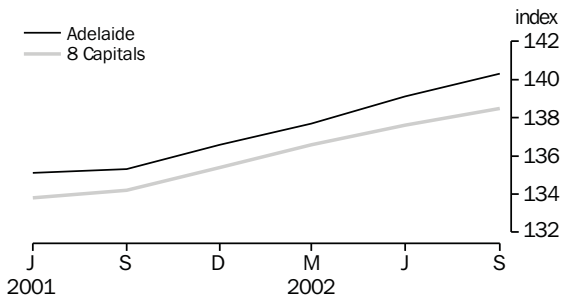


SECURED HOUSING FINANCE COMMITMENTS(a)

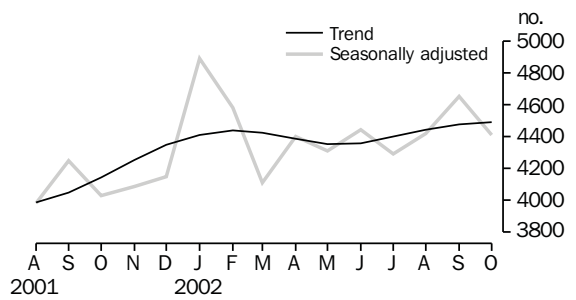


(a) Excludes alterations and additions. Includes refinancing.

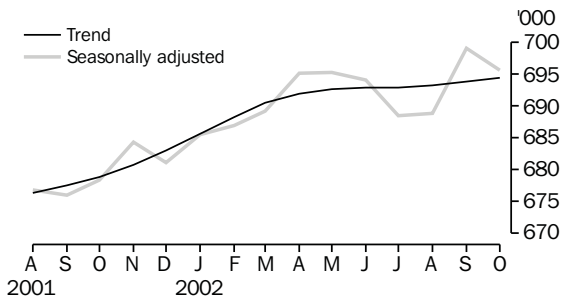
CONSUMER PRICE INDEX



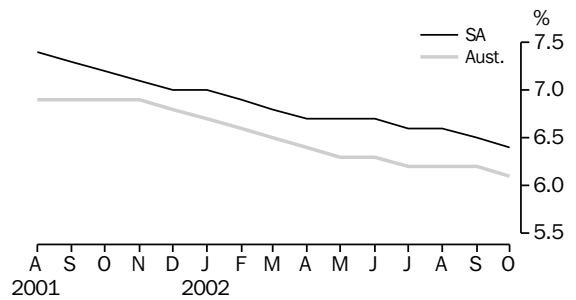
NEW MOTOR VEHICLE SALES



EMPLOYED PERSONS



UNEMPLOYMENT RATE—TREND



## LIST OF TABLES

			Page
STATISTICAL SUMMARY	<b>1</b>	Statistical summary	6
	<b>2</b>	State summary	8
STATE ACCOUNTS	<b>3</b>	State accounts at current prices	9
	<b>4</b>	State accounts at chain volume measures	9
INTERNATIONAL TRADE	<b>5</b>	Merchandise exports, by selected commodity group	10
	<b>6</b>	Merchandise exports, by selected countries and country groups	11
	<b>7</b>	Merchandise imports, by selected commodity group	12
CONSUMPTION AND INVESTMENT	<b>8</b>	Turnover of retail establishments, by industry—trend	13
	<b>9</b>	New motor vehicle sales, by type of vehicle	13
	<b>10</b>	Actual private new capital expenditure, by selected industry and type of asset	14
	<b>11</b>	Tourist accommodation	14
PRODUCTION	<b>12</b>	Building approvals	15
	<b>13</b>	Building commencements	16
	<b>14</b>	Value of building work done and completed during period	17
	<b>15</b>	Production, livestock products and selected commodities	18
	<b>16</b>	Consumer price index, by group—Adelaide	19
LABOUR FORCE AND DEMOGRAPHY	<b>17</b>	Estimated resident population and components of population change	20
	<b>18</b>	Births, deaths, marriages and divorces	20
	<b>19</b>	Civilian labour force status	21
	<b>20</b>	Civilian labour force, unemployment and participation rates	22
AVERAGE WEEKLY EARNINGS	<b>21</b>	Average weekly earnings of employees	23
FINANCIAL MARKETS	<b>22</b>	Secured housing finance commitments	24
	<b>23</b>	Finance commitments	24

Indicator	Period	South Australia			Australia			SA as a % of Aust.	Source index
		Number	% change from		Number	% change from			
			Previous period	Same period previous year		Previous period	Same period previous year		
<b>State accounts</b>									
Domestic final demand									
Current prices trend (\$m)	June qtr 02	13 099	2.7	10.8	184 498	2.0	8.3	7.1	(1)
Chain volume measures trend (\$m)	June qtr 02	12 650	1.7	8.2	179 128	1.3	6.1	7.1	(1)
Private final consumption expenditure									
Current prices trend (\$m)	June qtr 02	7 986	2.2	8.2	110 015	1.9	6.9	7.3	(1)
Chain volume measures trend (\$m)	June qtr 02	7 752	1.4	5.9	106 517	1.3	4.5	7.3	(1)
Private gross fixed capital formation									
Current prices trend (\$m)	June qtr 02	2 195	4.5	24.1	33 896	3.7	17.6	6.5	(1)
Chain volume measures trend (\$m)	June qtr 02	2 159	4.4	23.4	33 425	3.5	17.1	6.5	(1)
Compensation of employees									
Current prices trend (\$m)	June qtr 02	5 577	0.9	6.3	85 872	1.3	4.7	6.5	(1)
<b>International accounts</b>									
Exports (\$m)	Sep 02	757.1	-8.9	1.3	9 353.3	-1.5	-6.1	8.1	(2)
Imports (\$m)	Sep 02	475.2	-0.2	-9.2	10 841.0	-4.6	11.8	4.4	(2)
<b>Consumption and investment</b>									
Retail turnover									
Current prices original (\$m)	Sep 02	1 030.3	-3.5	8.1	13 775.0	-2.6	7.4	7.5	(3)
Current prices trend (\$m)	Sep 02	1 084.7	0.3	9.2	14 419.3	0.4	7.5	7.5	(3)
Chain volume measures original (\$m)	Sept qtr 02	3 018.3	1.2	6.8	40 268.4	1.8	5.5	7.5	(3)
New motor vehicle sales									
Original (no.)	Oct 02	4 499	7.5	8.5	72 332	9.5	9.0	6.8	(4)
Trend (no.)	Oct 02	4 493	0.3	8.4	70 739	0.4	6.8	6.4	(4)
Private new capital expenditure									
Current prices original (\$m)	June qtr 02	801	24.8	42.5	10 751	19.3	5.8	7.5	(5)
Current prices trend (\$m)	June qtr 02	795	9.2	32.5	10 182	1.6	6.2	7.8	(5)
Private new capital expenditure (\$m)	2001-02	2 798	5.6	..	39 716	1.0	..	7.0	(5)
Takings from accommodation—hotels, motels, guesthouses and serviced apartments									
	June qtr 02	52.9	-9.1	1.6	1 100.1	-9.4	-1.0	4.8	(6)
<b>Production</b>									
Dwelling unit approvals									
Original (no.)	Sep 02	860	-19.8	-0.3	13 620	-24.9	-3.7	6.3	(7)
Trend (no.)	Sep 02	896	0.0	0.3	15 360	0.3	5.0	5.8	(7)
Dwelling units commenced (no.)	June qtr 02	2 659	14.0	63.3	43 178	12.2	43.5	6.2	(8)
Value of non-residential building approvals—trend (\$m)									
	Sep 02	75.9	6.2	13.5	1 271.9	5.5	17.2	6.0	(7)
Value of total building activity									
Commenced (\$m)	June qtr 02	557.0	10.5	2.3	10 862.3	1.3	25.3	5.1	(8)
Work done (\$m)	June qtr 02	556.2	11.1	34.8	10 841.6	14.9	28.1	5.1	(8)
Work yet to be done (\$m)	June qtr 02	773.1	4.0	28.8	16 695.4	2.4	35.9	4.6	(8)
Value of engineering construction work done (\$m)									
	June qtr 02	387.5	4.8	5.6	5 723.2	11.8	11.8	6.8	(9)
Manufacturing production									
Red meat trend (tonnes)	Sep qtr	62 986	2.6	18.2	801 205	2.9	3.0	7.9	(11)
Mineral exploration expenditure (other than for petroleum)(a) (\$m)									
	June qtr 02	7.9	1.3	8.2	156.5	-1.3	-6.9	5.0	(12)

(a) From July 2000 value data no longer contains Wholesale Sales Tax.

Indicator	Period	South Australia			Australia			SA as a % of Aust.	Source index
		Number	% change from		Number	% change from			
			Previous period	Same period previous year		Previous period	Same period previous year		
<b>Prices(a)</b>									
CPI—All groups (index no.)	Sep qtr 02	140.3	0.9	3.7	138.5	0.7	3.2	..	(13)
Price index of materials used in house building (index no.)	June qtr 02	133.1	1.7	2.8	127.8	1.3	2.7	..	(14)
Price index of materials used in building other than houses (index no.)	June qtr 02	120.7	1.4	2.8	120.3	1.6	2.6	..	(14)
Price index of established houses (index no.)	June qtr 02	159.7	4.1	17	189.5	4.9	18.9	..	(16)
Price index of project homes (index no.)	June qtr 02	151.2	1.3	5.4	139.9	1.0	3.3	..	(16)
<b>Labour force and demography</b>									
Population (resident at end qtr) ('000)	Mar qtr 02	1 520.6	0.1	0.5	19 657.4	0.3	1.2	7.7	(17)
Labour force									
Original ('000)	Oct 02	742.6	-1.3	1.6	9 960.5	-1.1	1.0	7.5	(18)
Trend ('000)	Oct 02	742.3	0.0	1.5	9 973.9	0.1	1.2	7.4	(18)
Employed persons									
Original ('000)	Oct 02	697.5	-1.0	2.6	9 390.6	-0.6	2.0	7.4	(18)
Trend ('000)	Oct 02	694.5	0.1	2.3	9 364.6	0.1	2.0	7.4	(18)
Participation rate									
Original(b) (%)	Oct 02	60.7	-0.8	0.5	63.4	-0.8	-0.3	..	(18)
Trend(b) (%)	Oct 02	60.7	0.0	0.5	63.5	0.0	-1.0	..	(18)
Unemployment rate									
Original(b) (%)	Oct 02	6.1	-0.3	-0.9	5.7	-0.5	-1.0	..	(18)
Trend(b) (%)	Oct 02	6.4	-0.1	-0.8	6.1	-0.1	-0.8	..	(18)
Job vacancies ('000)	Aug 02	7.8	11.3	19.0	109.6	21.4	13.0	7.1	(19)
Industrial disputes ('000 working days lost)	Aug 02	1.3	-23.5	-84.0	16.3	-25.2	-60.2	8.0	(20)
<b>Income</b>									
Average weekly earnings (full-time adults; ordinary time)									
Original (\$)	Aug 02	805.50	0.8	1.7	879.40	1.5	4.9	..	(21)
Trend (\$)	Aug 02	805.50	0.4	1.9	878.80	1.1	5.0	..	(21)
Wage cost index (total hourly rate excluding bonuses)(c) (index no.)	Sep qtr 02	119.9	4.1	6.5	117.4	1.3	3.3	..	(22)
<b>Financial markets</b>									
Secured housing finance(d) (\$m)	Sep 02	458.2	-3.8	10.6	8 046.8	-4.7	10.2	5.7	(23)
Finance commitments									
Personal (\$m)	Sep 02	329.5	-15.7	25	5 075.5	-10.4	18.8	6.5	(24)
Commercial (\$m)	Sep 02	959.7	-4.8	86.2	20 784.4	-15.6	42.7	4.6	(24)
Lease (\$m)	Sep 02	13.3	8.1	-1.5	533.9	0.8	-6.8	2.5	(24)
Interest rates(b)									
Banks new housing loans (%)	Sep 02	..	..	..	6.55	0.00	0.00	..	(25)
Bank loans—small, medium business(e) (%)	Sep 02	..	..	..	8.00	0.00	0.20	..	(25)
Bank loans—large business (%)	Sep 02	..	..	..	8.35	0.00	0.05	..	(25)

(a) Base year of each index 1989-90 = 100.

(b) Change is shown in terms of percentage points.

(c) Base year of index Sep 1997 = 100.

(d) Excludes alterations and additions. Includes refinancing.

(e) Rate for business loans over \$50,000.

# 2

## STATE SUMMARY

Indicator	Period	NSW	Vic.	Qld	SA	WA	Tas.	NT	ACT	Source index
SELECTED INDICATORS										
CPI—All groups(a) (index no.)	Sep qtr 02	139.6	137.8	139.2	<b>140.3</b>	135.8	137.5	135.4	138.1	(13)
Participation rate trend (%)	Oct 02	62.3	63.4	64.9	<b>60.7</b>	66.5	58.1	72.0	73.4	(18)
Unemployment rate trend (%)	Oct 02	5.7	5.8	7.1	<b>6.4</b>	6.2	8.6	5.2	4.3	(18)
Average weekly earnings (full-time adults; ordinary time) trend (\$)	Aug 02	915.40	892.10	813.80	<b>805.50</b>	879.80	812.10	845.40	983.00	(21)
SELECTED INDICATORS PER HEAD OF POPULATION(b)										
State final demand										
Chain volume measures trend (\$'000)	June qtr 02	9.2	9.2	8.6	<b>8.3</b>	8.9	7.8	12.8	17.0	(1)
Retail turnover										
Current prices original (\$)	Sep 02	726.3	666.5	724.0	<b>677.6</b>	668.1	569.6	764.0	888.5	(3)
Current prices, trend	Sep 02	756.3	704.0	745.2	<b>713.3</b>	716.4	616.6	759.9	929.7	(3)
New motor vehicle Sales trend (no. per '000 population)	Oct 02	3.6	4.0	3.8	<b>3.0</b>	3.2	2.6	3.0	3.6	(4)
Private new capital expenditure										
Current prices trend (\$)	June qtr 02	425.7	545.0	470.5	<b>522.8</b>	723.7	523.8	2 164.3	423.8	(5)
Dwelling unit approvals										
Original (no. per '000 population)	Sep 02	0.562	0.790	0.725	<b>0.566</b>	0.855	0.376	0.541	1.754	(7)
Trend (no. per '000 population)	Sep 02	0.607	0.921	0.899	<b>0.589</b>	0.970	0.412	0.576	1.386	(7)
Secured housing finance(c) (\$)	Sep 02	497.6	384.9	374.7	<b>301.2</b>	399.3	192.2	160.3	399.0	(23)
PERCENTAGE CHANGE FROM PREVIOUS PERIOD										
State final demand										
Chain volume measures trend (%)	June qtr 02	1.3	1.2	1.9	<b>1.7</b>	0.2	1.5	3.1	0.6	(1)
Retail turnover										
Current prices original (%)	Sep 02	-2.1	-2.4	-1.3	<b>-3.5</b>	-5.6	-4.0	-7.5	-3.7	(3)
Current prices, trend	Sep 02	0.7	-0.1	0.6	<b>0.3</b>	0.1	-0.1	0.4	0.5	(3)
New motor vehicle sales trend (%)	Oct 02	0.0	0.9	0.9	<b>0.3</b>	0.5	-1.0	-1.3	-0.6	(4)
Private new capital expenditure										
Current prices trend (%)	June qtr 02	-4.0	2.7	2.4	<b>9.2</b>	2.8	8.3	13.1	3.8	(5)
Dwelling unit approvals										
Original (%)	Sep 02	-20.3	-33.3	-37.6	<b>-19.8</b>	-11.8	0.6	28.6	195.3	(7)
Trend (%)	Sep 02	-1.6	-0.3	0.5	<b>0.0</b>	1.7	-1.5	6.5	19.8	(7)
CPI—All groups (%)	Sep qtr 02	0.6	0.7	0.8	<b>0.9</b>	0.9	0.4	0.3	0.7	(13)
Participation rate trend(d) (%)	Oct 02	-0.1	0.0	0.1	<b>0.0</b>	60.0	0.0	-0.4	0.1	(18)
Unemployment rate trend(d) (%)	Oct 02	-0.1	0.0	-0.1	<b>-0.1</b>	0.0	-0.1	0.3	0.0	(18)
Average weekly earnings (full-time adults; ordinary time) trend (%)	Aug 02	0.6	2.0	1.0	<b>0.4</b>	1.2	1.8	-1.1	2.1	(21)
Secured housing finance (%)	Sep 02	-4.9	-6.4	-1.4	<b>-3.8</b>	-7.2	-7.1	0.0	2.4	(23)

(a) Base year of index 1989-90 = 100.

(b) The latest quarterly estimate of Australian resident population has been used to calculate ratios for subsequent periods.

(c) Excludes alterations and additions. Includes refinancing.

(d) Change is shown in terms of percentage points.



### 3

#### STATE ACCOUNTS AT CURRENT PRICES

Period(a)	Final consumption expenditure		Gross fixed capital formation			State final demand	Gross State product	Compensation of employees
	Households	General government	Private	Public				
ANNUAL (\$m)								
<b>1999-00</b>	26 618	8 789	(b)10 163	(b)-1 445	44 125	41 192	19 965	
<b>2000-01</b>	28 880	9 143	8 522	112	46 658	44 119	20 938	
<b>2001-02</b>	31 067	9 542	8 281	1 476	50 366	47 002	21 901	
QUARTERLY, TREND (\$m)								
<b>2000-01</b>								
March	7 277	2 279	1 738	334	11 629	n.a.	5 212	
June	7 383	2 323	1 769	344	11 818	n.a.	5 247	
<b>2001-02</b>								
September	7 504	2 365	1 835	364	12 069	n.a.	5 334	
December	7 650	2 420	1 962	380	12 406	n.a.	5 446	
March	7 815	2 467	2 100	381	12 760	n.a.	5 529	
June	7 986	2 492	2 195	379	13 099	n.a.	5 577	

(a) Sum of quarterly data does not equal the annual estimates. See Changes in this Publication on page 2 for more details.

(b) The negative figure for Public gross fixed capital formation and the larger than usual positive figure for Private gross fixed capital formation are the result of the sale of the South Australian electrical transmission network in December quarter 1999. For more information see *National Income, Expenditure and Product, Australian National Accounts, June 2000* (cat. no. 5206.0).

Source: *Australian National Accounts: Quarterly State Details* (cat. no. 5206.0), and *Australian National Accounts: State Accounts* (cat. no. 5220.0).

### 4

#### STATE ACCOUNTS AT CHAIN VOLUME MEASURES(a)

Period(b)	Final consumption expenditure		Gross fixed capital formation			State final demand	Gross State product
	Households	General government	Private	Public			
ANNUAL (\$m)							
<b>1999-00</b>	27 835	9 000	(c)10516	(c)-2384	45 859	42 727	
<b>2000-01</b>	28 880	9 143	8 522	-732	46 658	44 119	
<b>2001-02</b>	30 470	9 352	8 180	521	49 463	45 765	
QUARTERLY, TREND (\$m)							
<b>2000-01</b>							
March	7 247	2 268	1 726	335	11 572	n.a.	
June	7 323	2 281	1 750	343	11 694	n.a.	
<b>2001-02</b>							
September	7 415	2 293	1 814	364	11 884	n.a.	
December	7 528	2 320	1 937	379	12 163	n.a.	
March	7 645	2 349	2 068	380	12 442	n.a.	
June	7 752	2 368	2 159	377	12 650	n.a.	

(a) Reference year for chain volume measures is 2000-2001.

(b) Sum of quarterly data does not equal the annual estimates. See Changes in this Publication on page 2 for more details.

(c) The negative figure for Public gross fixed capital formation and the larger than usual positive figure for Private gross fixed capital formation are the result of the sale of the South Australian electrical transmission network in December quarter 1999. For more information see *National Income, Expenditure and Product, Australian National Accounts, June 2000* (cat. no. 5206.0).

Source: *Australian National Accounts: National Income, Expenditure and Product* (cat. no. 5206.0), and *Australian National Accounts: State Accounts* (cat. no. 5220.0).

## 5

## MERCHANDISE EXPORTS, BY SELECTED COMMODITY GROUP(a)

<i>Period</i>	<i>Meat and meat preparations</i>	<i>Wheat</i>	<i>Wine</i>	<i>Wool and sheepskins (excl. wool tops)</i>	<i>Machinery</i>	<i>Metals and metal manufactures</i>	<i>Fish and crustaceans</i>	<i>Road vehicles, parts and accessories</i>	<i>Petroleum and petroleum products</i>	<i>Total(b)</i>
	\$'000	\$'000	\$'000	\$'000	\$'000	\$'000	\$'000	\$'000	\$'000	\$'000
<b>1999-00</b>	160 483	473 086	899 348	179 716	353 205	805 744	394 375	883 792	218 466	6 188 231
<b>2000-01</b>	262 565	767 524	1 081 599	236 034	381 785	1 019 926	451 841	1 399 489	355 781	8 286 782
<b>2001-02</b>	316 212	1 154 933	1 358 463	256 722	321 574	913 417	474 854	1 613 919	250 536	9 103 076
<b>2000-01</b>										
April	26 339	93 911	121 497	19 887	32 164	89 887	23 097	155 998	52 960	848 280
May	27 404	152 550	99 062	22 367	33 559	79 393	28 980	115 827	33 738	821 839
June	23 977	44 178	93 781	20 353	38 196	90 878	46 917	100 111	29 883	704 372
<b>2001-02</b>										
July	18 743	84 671	90 064	15 060	31 470	80 081	105 885	85 602	4 227	694 672
August	16 578	104 764	111 866	12 339	23 309	65 167	109 720	87 611	28 997	757 774
September	26 569	50 769	145 952	14 797	23 338	83 420	18 330	157 731	26 830	747 539
October	29 804	74 206	134 368	23 871	24 161	80 651	16 992	217 406	17 879	839 374
November	30 056	95 995	81 272	24 908	21 862	89 069	23 757	135 759	30 543	716 786
December	32 136	93 070	105 237	17 789	23 070	62 905	31 363	207 778	20 094	820 447
January	22 604	136 558	61 255	15 357	19 868	63 089	35 902	25 652	16 755	561 836
February	31 151	86 109	83 899	23 524	25 522	82 009	26 187	122 727	2 328	745 030
March	34 046	119 775	127 140	32 960	35 652	88 158	22 365	170 972	44 166	875 899
April	24 011	102 777	122 653	22 942	32 376	74 900	25 363	134 415	8 900	757 000
May	26 189	114 535	146 122	34 208	33 474	85 067	22 517	84 964	32 896	790 824
June	24 324	91 704	148 634	18 967	27 472	58 902	36 472	183 302	16 920	795 897
<b>2002-03</b>										
July	17 509	25 246	115 121	20 534	27 473	67 414	90 175	110 752	27 041	704 057
August	16 299	87 890	121 491	14 396	24 681	64 841	138 036	134 644	25 870	830 817
September	26 499	60 374	164 385	19 575	31 145	71 716	38 044	82 528	28 882	757 069

(a) Restrictions are placed on the release of statistics for certain commodities for reasons of confidentiality. These restrictions do not affect total export and import figures, but they can affect some items within commodity, industry and country tables. See *International Trade* (cat. no. 5422.0), Explanatory Notes, paragraph 30, for more details.

(b) Includes other commodity groups not listed.

Source: ABS data available on request.

## 6

## MERCHANDISE EXPORTS, BY SELECTED COUNTRIES AND COUNTRY GROUPS

Period	European Union					South-East and North-East Asia				
	United States of America	Middle East	United Kingdom	Total European Union	New Zealand	Japan	China	Hong Kong	ASEAN	Total
	\$'000	\$'000	\$'000	\$'000	\$'000	\$'000	\$'000	\$'000	\$'000	\$'000
<b>1999-00</b>	954 681	724 871	625 154	1 073 928	446 026	787 295	315 199	255 679	492 304	2 297 913
<b>2000-01</b>	1 354 759	1 335 811	713 525	1 232 563	480 887	963 481	437 939	298 939	682 671	2 882 839
<b>2001-02</b>	1 597 822	1 825 179	784 381	1 338 043	568 710	937 578	406 112	240 066	596 495	2 594 027
<b>2000-01</b>										
April	115 986	183 447	98 255	158 995	47 291	80 941	43 900	15 196	65 386	268 384
May	141 133	160 104	55 667	102 367	45 043	105 667	21 910	22 827	53 850	253 674
June	139 602	71 593	54 666	96 847	48 740	85 966	44 319	23 205	62 383	260 621
<b>2001-02</b>										
July	115 848	121 291	53 283	86 715	48 927	141 618	18 061	12 359	54 577	250 375
August	131 917	134 855	67 349	98 428	52 532	146 655	19 060	16 613	44 614	258 525
September	149 121	114 225	93 941	150 232	53 822	74 345	49 322	9 474	51 316	211 033
October	137 817	183 472	92 365	159 319	52 409	45 629	39 129	21 422	47 777	213 989
November	142 528	120 739	46 215	92 135	50 254	85 470	44 104	25 897	48 034	242 844
December	187 722	172 462	54 885	108 541	52 684	71 934	35 887	24 400	41 232	200 880
January	44 318	156 335	34 647	75 972	21 104	39 434	17 643	31 673	54 114	169 495
February	96 390	159 837	48 505	93 817	39 929	61 201	20 726	25 147	54 488	191 222
March	151 253	187 747	70 971	134 792	54 261	59 059	63 338	27 514	53 463	245 440
April	131 376	191 395	64 701	96 862	61 889	74 655	33 973	12 231	41 478	196 230
May	129 633	133 050	79 332	116 707	36 358	53 042	37 269	19 133	51 441	205 756
June	179 897	149 770	78 189	124 523	44 541	84 535	27 599	14 205	53 961	208 237
<b>2002-03</b>										
July	74 854	102 260	69 831	116 261	54 995	129 520	24 778	7 936	52 460	270 886
August	149 577	100 913	70 002	115 096	64 081	189 751	29 669	15 399	47 465	311 101
September	93 026	127 763	105 830	168 341	46 488	91 136	33 951	7 793	53 217	230 817

Source: ABS data available on request.

## 7

## MERCHANDISE IMPORTS, BY SELECTED COMMODITY GROUP(a)

<i>Period</i>	<i>Food, beverages and tobacco</i>	<i>Petroleum and petroleum products</i>	<i>Chemicals</i>	<i>Textiles</i>	<i>Metals and metal manufactures</i>	<i>Machinery</i>	<i>Road vehicle parts and accessories</i>	<i>Other manufactured goods</i>	<i>Total(b)</i>
	\$'000	\$'000	\$'000	\$'000	\$'000	\$'000	\$'000	\$'000	\$'000
<b>1999-00</b>	163 509	515 641	263 959	97 100	262 737	1 164 672	834 842	845 913	4 319 348
<b>2000-01</b>	183 196	968 428	284 227	97 281	315 327	1 205 016	854 759	926 817	5 044 553
<b>2001-02</b>	205 307	869 161	266 622	106 543	332 538	1 399 576	887 698	1 058 212	5 346 878
<b>2000-01</b>									
April	15 533	99 678	57 548	7 239	25 625	104 946	71 621	75 171	478 988
May	16 160	77 698	29 168	9 156	23 837	117 562	67 744	73 174	435 103
June	17 518	109 994	14 728	8 622	26 545	116 851	71 909	79 700	461 726
<b>2001-02</b>									
July	14 737	27 393	19 654	7 571	28 988	99 212	74 725	89 592	378 430
August	19 403	139 722	19 498	10 687	29 850	139 726	98 097	111 202	584 391
September	17 922	172 850	19 594	7 687	25 943	104 533	68 422	92 551	523 420
October	23 648	63 528	19 978	9 154	33 610	159 511	82 343	91 382	496 998
November	25 109	13 766	21 446	10 959	25 354	130 063	66 386	95 258	406 947
December	17 232	78 949	18 247	6 218	23 108	99 669	52 322	70 152	379 968
January	16 611	1 347	26 023	9 135	33 252	136 134	63 910	94 197	406 187
February	16 447	127 019	19 898	8 556	24 823	109 118	73 577	91 103	490 816
March	12 504	39 514	35 457	8 338	26 536	94 835	72 474	79 012	389 943
April	11 993	78 266	24 836	9 947	27 980	113 247	81 305	79 415	450 747
May	14 597	62 102	27 331	9 842	27 092	117 219	80 639	86 692	445 885
June	15 103	64 704	14 661	8 448	26 002	96 307	73 499	77 657	393 147
<b>2002-03</b>									
July	17 678	66 712	18 971	7 211	33 111	111 831	88 021	91 490	454 735
August	20 326	63 951	19 181	11 171	35 439	121 988	82 993	97 878	476 121
September	19 887	79 309	20 748	8 892	32 537	123 842	77 150	92 560	475 168

(a) Restrictions are placed on the release of statistics for certain commodities for reasons of confidentiality. These restrictions do not affect total export and import figures, but they can affect some items within commodity, industry and country tables. See *International Trade* (cat. no. 5422.0), Explanatory Notes, paragraph 30, for more details.

(b) Includes other commodity groups not listed.

Source: ABS data available on request.

## 8

## TURNOVER OF RETAIL ESTABLISHMENTS, BY INDUSTRY—TREND

Period	Food retailing	Department stores	Clothing and soft good retailing	Household good retailing	Recreational good retailing	Other retailing	Hospitality and services	Total
	\$m	\$m	\$m	\$m	\$m	\$m	\$m	\$m
<b>2001-02</b>								
July	409.5	94.3	48.2	119.2	27.6	130.2	151.9	981.3
August	413.7	94.2	48.1	119.5	27.1	131.5	153.3	987.9
September	417.5	94.8	48.2	119.9	26.8	131.8	154.0	993.1
October	420.6	95.9	48.6	120.9	26.9	131.1	154.7	998.6
November	423.0	97.1	49.4	122.9	27.4	129.8	156.3	1 005.9
December	425.5	98.4	50.4	125.7	28.2	128.9	159.2	1 016.0
January	427.8	99.2	51.5	129.3	28.9	129.4	163.2	1 029.0
February	430.2	99.4	52.4	133.2	29.0	131.1	167.3	1 043.1
March	433.1	99.4	53.1	136.8	28.8	133.3	170.7	1 055.9
April	436.5	99.4	53.5	139.1	28.3	134.6	173.2	1 065.4
May	440.2	99.5	53.8	139.5	28.2	134.3	175.3	1 071.3
June	444.0	99.6	54.0	138.5	28.6	132.4	177.9	1 075.0
<b>2002-03</b>								
July	447.6	99.6	54.4	136.8	29.3	129.9	181.3	1 078.5
August	450.8	99.5	54.7	134.8	30.2	127.4	184.8	1 081.7
September	453.4	99.3	55.1	132.9	31.1	125.2	188.2	1 084.7

Source: Retail Trade, Australia (cat. no. 8501.0).

## 9

## NEW MOTOR VEHICLE SALES, BY TYPE OF VEHICLE

Period	Original			Seasonally adjusted			Trend estimate		
	Passenger vehicles	Other vehicles	Total	Passenger vehicles	Other vehicles	Total	Passenger vehicles	Other vehicles	Total
<b>2001-02</b>									
August	2 995	1 176	4 171	2 869	1 113	3 982	2 830	1 160	3 990
September	2 580	1 090	3 670	2 899	1 350	4 249	2 850	1 199	4 049
October	2 995	1 153	4 148	2 874	1 158	4 032	2 899	1 246	4 145
November	3 176	1 339	4 515	2 803	1 283	4 086	2 966	1 288	4 254
December	2 989	1 390	4 379	2 882	1 270	4 152	3 026	1 322	4 348
January	2 681	1 046	3 727	3 461	1 433	4 894	3 061	1 352	4 413
February	2 892	1 276	4 168	3 121	1 461	4 582	3 060	1 381	4 441
March	2 889	1 335	4 224	2 859	1 254	4 113	3 023	1 402	4 425
April	2 727	1 258	3 985	2 996	1 405	4 401	2 973	1 415	4 388
May	2 945	1 703	4 648	2 783	1 530	4 313	2 938	1 417	4 355
June	3 342	1 801	5 143	3 030	1 414	4 444	2 940	1 420	4 360
<b>2002-03</b>									
July	3 049	1 408	4 457	2 922	1 373	4 295	2 977	1 425	4 402
August	3 108	1 429	4 537	3 027	1 394	4 421	3 016	1 428	4 444
September	2 936	1 251	4 187	3 170	1 484	4 654	3 047	1 433	4 480
October	3 109	1 390	4 499	2 986	1 426	4 412	3 065	1 428	4 493

Source: Sales of New Motor Vehicles, Australia (cat. no. 9314.0.55.001).

## 10

## ACTUAL PRIVATE NEW CAPITAL EXPENDITURE, BY SELECTED INDUSTRY AND TYPE OF ASSET

Period	Industry			Total	Type of asset	
	Mining	Manufacturing	Other selected industries		New buildings and structures	Equipment, plant and machinery
ANNUAL (\$m)						
<b>1999-00</b>	243	854	1 356	2 451	619	1 832
<b>2000-01</b>	419	816	1 415	2 650	656	1 994
<b>2001-02</b>	335	818	1 645	2 798	570	2 228
QUARTERLY, ORIGINAL (\$m)						
<b>2000-01</b>						
March	48	187	355	590	105	485
June	62	201	299	562	107	455
<b>2001-02</b>						
September	75	183	287	545	125	420
December	92	242	475	809	174	635
March	72	176	394	642	123	519
June	96	217	489	801	148	654
QUARTERLY, TREND (\$m)						
<b>2000-01</b>						
March	n.a.	n.a.	n.a.	637	145	492
June	n.a.	n.a.	n.a.	600	121	479
<b>2001-02</b>						
September	n.a.	n.a.	n.a.	604	123	481
December	n.a.	n.a.	n.a.	659	140	519
March	n.a.	n.a.	n.a.	728	148	580
June	n.a.	n.a.	n.a.	795	150	645

Source: Private New Capital Expenditure, Australia (cat. no. 5625.0) and ABS data available on request.

## 11

## TOURIST ACCOMMODATION

Period	Licensed hotels with facilities				Motels and guesthouses				Serviced apartments			
	Estab-lish-ments	Guest rooms	Room occu-pancy	Takings	Estab-lish-ments	Guest rooms	Room occu-pancy	Takings	Estab-lish-ments	Guest rooms	Room occu-pancy	Takings
	no.	no.	%	\$'000	no.	no.	%	\$'000	no.	no.	%	\$'000
<b>1999-00</b>												
June	60	4 037	58.7	23 033	147	5 212	53.1	19 309	26	1 208	62.7	6 912
<b>2000-01</b>												
September	60	4 070	56.3	23 960	147	5 218	50.6	19 898	26	1 211	56.9	6 252
December	62	4 128	58.2	26 070	146	5 204	54.4	21 557	26	1 220	62.4	7 232
March	62	3 905	59.9	25 686	146	5 217	55.2	21 889	27	1 280	67.1	7 955
June	61	4 066	55.9	23 849	146	5 230	50.5	20 289	27	1 300	63.2	7 959
<b>2001-02</b>												
September	61	4 078	56.3	23 498	146	5 231	49.7	19 926	27	1 293	60.1	7 019
December	61	4 083	61.0	26 556	144	5 170	51.9	21 044	27	1 283	67.0	8 218
March	62	4 091	61.6	27 321	145	5 196	55.6	22 468	27	1 293	70.5	8 454
June	62	4 364	55.4	24 362	145	5 234	50.4	20 482	29	1 357	65.6	8 078

Source: Tourist Accommodation, Australia (cat. no. 8635.0).

Period	Houses		Total dwelling units		New residential building \$m	Alterations and additions to residential building \$m	Total residential building \$m	Non-residential building \$m	Total building \$m
	Private sector	Total	Private sector	Total					
	no.	no.	no.	no.					
ANNUAL									
<b>1999-00</b>	8 290	8 392	9 915	10 024	1 022.9	188.9	1 211.8	585.7	1 797.5
<b>2000-01</b>	5 555	5 644	6 659	6 775	735.6	157.3	892.9	718.2	1 611.1
<b>2001-02</b>	8 863	9 177	10 527	10 881	1 201.0	191.6	1 392.6	780.5	2 173.1
MONTHLY, ORIGINAL									
<b>2000-01</b>									
June	641	644	733	736	84.2	14.3	98.5	40.8	139.3
<b>2001-02</b>									
July	765	771	966	975	98.3	15.9	114.2	45.9	160.1
August	736	743	810	827	86.3	17.0	103.3	118.4	221.7
September	712	731	840	863	95.9	14.5	110.3	48.3	158.6
October	778	797	877	904	98.0	19.6	117.7	81.9	199.6
November	764	810	881	931	100.4	16.1	116.5	57.3	173.8
December	699	745	924	970	107.9	13.0	120.9	42.9	163.7
January	667	688	741	764	86.7	13.2	99.8	84.0	183.9
February	770	839	899	971	104.8	17.7	122.6	59.6	182.2
March	756	774	886	904	97.0	14.3	111.3	74.9	186.2
April	701	714	970	987	111.3	16.2	127.5	53.1	180.6
May	799	823	957	981	119.3	16.5	135.9	53.1	189.0
June	716	742	776	804	94.9	17.6	112.6	61.1	173.6
<b>2002-03</b>									
July	796	843	878	935	113.7	20.1	133.8	48.3	182.2
August	808	838	1038	1072	107.0	25.2	132.2	121.0	253.2
September	763	795	826	860	99.7	20.3	120.0	65.6	185.6
MONTHLY, TREND									
<b>2000-01</b>									
June	623	629	722	730	75.9	14.7	90.6	58.8	149.4
<b>2001-02</b>									
July	679	687	780	792	81.7	15.1	96.8	62.0	158.8
August	719	730	830	846	87.4	15.4	102.8	64.4	167.2
September	744	762	869	893	92.9	15.6	108.6	66.9	175.5
October	758	785	895	927	98	15.7	113.7	69.5	183.2
November	763	798	907	946	102	15.7	117.8	71.6	189.4
December	764	803	917	959	105.6	15.7	121.3	71.9	193.2
January	763	802	927	968	108.9	15.8	124.7	70.2	194.9
February	756	792	926	963	110.9	15.8	126.7	66.6	193.3
March	745	776	916	948	111.2	15.9	127.1	62.2	189.3
April	737	764	900	929	109.6	16.4	125.9	58.7	184.6
May	736	763	884	914	106.4	17.2	123.6	58.3	181.9
June	744	772	874	906	102.7	18.2	121.0	60.9	181.8
<b>2002-03</b>									
July	757	788	865	900	99.3	19.5	118.8	65.7	184.4
August	769	801	860	896	96.3	20.8	117.1	71.5	188.6
September	782	819	854	896	94.1	22.0	116.1	75.9	192.0

Source: Building Approvals, Australia (cat. no. 8731.0) and ABS data available on request.

## 13

## BUILDING COMMENCEMENTS

Period	New houses		Total dwelling units(a)		New residential building \$m	Alterations and additions to residential building \$m	Non-residential building		
	Private sector	Total	Private sector	Total			Private sector	Total	Total building
	no.	no.	no.	no.			\$m	\$m	\$m
<b>1999-00</b>	7 729	7 856	9 266	9 410	1 044.8	198.8	351.2	576.8	1 820.5
<b>2000-01</b>	5 303	5 390	6 442	6 556	779.2	161.3	390.5	729.6	1 670.1
<b>2001-02</b>	8 036	8 287	9 715	10 004	1 237.8	196.4	558.8	744.5	2 178.7
<b>1999-00</b>									
June	1 977	1 994	2 353	2 374	257.8	58.9	103.6	152.5	469.2
<b>2000-01</b>									
September	1 380	1 419	1 777	1 819	228.9	25.6	104.8	166.3	420.8
December	1 345	1 350	1 498	1 512	167.8	44.3	122.8	151.4	363.5
March	1 157	1 179	1 562	1 597	186.5	43.6	70.9	111.2	341.2
June	1 422	1 443	1 605	1 628	196.0	47.9	91.9	300.7	544.6
<b>2001-02</b>									
September	1 835	1 857	2 365	2 400	324.0	45.1	145.3	188.7	557.9
December	2 217	2 273	2 543	2 613	307.8	52.7	167.2	199.4	559.9
March	1 851	1 947	2 230	2 333	279.8	50.5	122.6	173.7	504.0
June	2 134	2 211	2 578	2 659	326.2	48.0	123.6	182.8	557.0

(a) Includes conversions.

Source: Building Activity, Australia (cat. no. 8752.0).



Period	New houses		New residential building			Non-residential building		Total building		
	Private sector	Total	Private sector	Total	Alterations and additions to residential building	Total residential building	Private sector	Total	Private sector	Total
	\$m	\$m	\$m	\$m	\$m	\$m	\$m	\$m	\$m	\$m
VALUE OF BUILDING WORK DONE										
<b>1999-00</b>	798.1	812.2	984.5	999.9	195.5	1 195.4	409.9	629.4	1 585.1	1 824.8
<b>2000-01</b>	679.7	686.9	835.5	845.0	161.9	1 006.8	395.0	624.0	1 385.4	1 630.9
<b>2001-02</b>	853.6	872.5	1 044.2	1 066.4	194.1	1 260.5	518.1	774.4	1 751.8	2 034.9
<b>1999-00</b>										
June	250.8	252.2	305.1	306.8	60.1	366.9	105.9	163.3	469.1	530.2
<b>2000-01</b>										
September	175.9	178.2	228.3	230.7	30.9	261.5	84.0	138.2	341.8	399.7
December	179.6	180.9	216.0	218.3	42.1	260.4	116.6	176.1	372.9	436.5
March	162.6	164.0	193.8	195.7	40.7	236.4	97.2	145.7	330.1	382.1
June	161.6	163.8	197.3	200.3	48.2	248.6	97.2	163.9	340.6	412.5
<b>2001-02</b>										
September	184.2	187.2	227.7	231.2	48.7	279.9	112.7	170.6	386.9	450.5
December	219.4	222.6	261.9	265.5	48.4	314.0	146.8	213.8	456.3	527.7
March	215.1	220.0	262.5	268.6	46.9	315.5	131.3	185.0	439.7	500.4
June	234.9	242.8	292.1	301.1	50.1	351.1	127.3	205.0	469.0	556.2
VALUE OF BUILDING WORK COMPLETED										
<b>1999-00</b>	713.5	730.1	867.6	886.2	191.9	1 078.1	362.9	538.4	1 419.4	1 616.4
<b>2000-01</b>	758.7	763.6	942.8	949.0	154.4	1 103.4	436.3	591.5	1 526.5	1 694.9
<b>2001-02</b>	749.6	765.7	883.7	903.1	180.2	1 083.3	430.7	718.7	1 488.2	1 802.0
<b>1999-00</b>										
June	217.9	220.1	297.9	300.1	65.7	365.8	69.6	122.0	432.8	487.8
<b>2000-01</b>										
September	175.5	176.2	199.0	199.9	31.4	231.4	133.2	180.5	362.5	411.9
December	222.2	224.8	313.7	317.3	35.8	353.1	82.8	107.7	430.7	460.8
March	173.0	174.3	216.4	217.9	34.9	252.8	82.4	138.5	330.9	391.2
June	188.0	188.3	213.7	213.9	52.2	266.1	137.9	164.9	402.4	431.0
<b>2001-02</b>										
September	149.9	153.2	173.1	177.6	55.0	232.6	75.5	121.0	300.5	353.7
December	194.3	197.6	220.5	224.4	38.1	262.5	129.3	259.9	386.3	522.4
March	174.8	177.2	231.9	234.8	39.4	274.2	83.8	127.4	353.7	401.6
June	230.5	237.7	258.2	266.2	47.8	314.0	142.0	210.3	447.6	524.4

Source: Building Activity, Australia (cat. no. 8752.0).

<i>Period</i>	<i>Pigmeat</i> <i>tonnes</i>	<i>Beef</i> <i>tonnes</i>	<i>Mutton</i> <i>tonnes</i>	<i>Lamb</i> <i>tonnes</i>	<i>Sawn timber(a)</i> <i>m<sup>3</sup></i>
<b>1999-00</b>	31 927	78 001	28 969	56 667	425 549
<b>2000-01</b>	36 679	82 533	36 103	61 893	389 417
<b>2001-02</b>	48 329	85 882	30 342	64 285	434 577
<b>2000-01</b>					
September	8 227	18 011	8 072	15 785	126 440
December	8 143	21 982	9 826	15 689	89 486
March	9 785	23 367	9 885	14 968	75 558
June	10 524	19 172	8 321	15 451	97 933
<b>2001-02</b>					
September	10 274	18 271	6 290	11 694	103 774
December	9 754	21 325	8 221	17 627	111 797
March	12 583	23 748	8 895	17 232	111 697
June	15 718	22 539	6 936	17 732	107 309
<b>2002-02</b>					
September	15 531	19 663	9 351	11 493	111 724

(a) From Australian softwood logs only.

Source: *Livestock Products, Australia (cat. no. 7215.0)* and ABS data available on request.

<i>Period</i>	<i>Food</i>	<i>Alcohol and tobacco</i>	<i>Clothing and footwear</i>	<i>Housing</i>	<i>House furnishings, supplies and services</i>	<i>Health</i>	<i>Transportation</i>	<i>Communication</i>	<i>Recreation</i>	<i>Education</i>	<i>Miscellaneous</i>	<i>All groups</i>
ANNUAL AVERAGE (1989-90 = 100.0)												
<b>1999-00</b>	130.8	179.1	103.3	97.0	112.9	165.7	129.4	97.7	119.1	215.8	148.8	126.3
<b>2000-01</b>	136.7	198.3	111.9	104.3	117.1	169.5	138.0	104.7	122.9	225.9	159.3	133.5
<b>2001-02</b>	143.1	207.3	111.1	108.2	120.6	173.0	135.8	105.8	126.9	235.8	165.1	137.2
QUARTERLY (1989-90 = 100.0)												
<b>2000-01</b>												
June	139.4	203.3	112.3	104.9	119.3	171.3	140.4	103.9	122.5	230.9	161.2	135.1
<b>2001-02</b>												
September	140.5	205.9	108.4	106.8	120.6	170.9	136.4	103.6	123.1	231.0	163.5	135.3
December	143.8	205.5	112.2	107.9	120.9	169.3	134.4	106.0	125.6	231.1	163.8	136.6
March	144.6	207.8	110.6	108.6	120.0	173.7	133.9	106.2	129.0	240.6	166.0	137.7
June	143.6	210.0	113.0	109.5	120.9	178.0	138.4	107.3	129.9	240.6	167.0	139.1
<b>2002-03</b>												
September	145.4	210.4	111.5	112.1	121.4	178.1	138.0	109.2	131.5	240.7	171.2	140.3
PERCENTAGE CHANGE FROM SAME QUARTER OF PREVIOUS YEAR												
<b>2000-01</b>												
June	5.7	11.4	8.0	6.7	5.2	2.0	6.4	5.3	3.3	4.6	4.7	5.9
<b>2001-02</b>												
September	5.0	6.5	-4.6	2.8	4.0	1.4	-0.3	1.8	0.3	4.6	3.6	2.3
December	7.2	4.8	0.9	3.8	4.4	1.0	-2.3	1.0	1.8	4.6	3.5	3.1
March	3.7	3.6	0.1	4.0	2.2	1.8	-2.3	1.8	4.9	4.2	3.8	2.7
June	3.0	3.3	0.6	4.4	1.3	3.9	-1.4	3.3	6.0	4.2	3.6	3.0
<b>2002-03</b>												
September	3.5	2.2	2.9	5.0	0.7	4.2	1.2	5.4	6.8	4.2	4.7	3.7
PERCENTAGE CHANGE FROM PREVIOUS QUARTER												
<b>2000-01</b>												
June	0.0	0.9	1.6	0.5	1.6	0.4	2.5	-0.4	-0.4	0.0	0.8	0.7
<b>2001-02</b>												
September	0.8	1.3	-3.4	1.8	1.1	-0.2	-2.8	-0.3	0.5	0.0	1.4	0.1
December	2.3	-0.2	3.5	1.0	0.2	-0.9	-1.5	2.3	2.0	0.0	0.2	1.0
March	0.6	1.1	-1.4	0.6	-0.7	2.6	-0.4	0.2	2.7	4.1	1.3	0.8
June	-0.7	1.1	2.2	0.8	0.8	2.5	3.4	1.0	0.7	0.0	0.6	1.0
<b>2002-03</b>												
September	1.3	0.2	-1.3	2.4	0.4	0.1	-0.3	1.8	1.2	0.0	2.5	0.9

Source: Consumer Price Index (cat. no. 6401.0).

# 17

## ESTIMATED RESIDENT POPULATION AND COMPONENTS OF POPULATION CHANGE(a)

Period	Net migration			Total increase	Population at end of period
	Natural increase	Interstate	Overseas(b)		
<b>1998-99</b>	6 751	-2 869	2 108	8 375	1 499 204
<b>1999-00</b>	6 306	-4 773	3 453	7 598	1 506 802
<b>2000-01</b>	5 635	-4 234	3 602	8 052	1 514 854
<b>1999-00</b>					
March	1 828	-1 735	662	1 406	1 497 587
June	1 448	-1 147	156	1 110	1 506 802
<b>2000-01</b>					
September	1 121	-1 030	924	1 778	1 508 580
December	1 490	-1 308	1 660	2 603	1 511 183
March	1 740	-1 264	655	1 894	1 513 077
June	1 284	-632	363	1 777	1 514 854
<b>2001-02</b>					
September	1 244	-632	1 130	1 742	1 516 596
December	1 264	-171	1 185	2 278	1 518 874
March	1 737	-529	537	1 745	1 520 619

(a) Includes category jumping.

Source: Australian Demographic Statistics (cat. no. 3101.0).

# 18

## BIRTHS, DEATHS, MARRIAGES AND DIVORCES

Period	Registrations			
	Births	Deaths	Marriages	Divorces
<b>1998-99</b>	18 399	11 648	8 034	4 191
<b>1999-00</b>	17 896	11 590	8 428	4 197
<b>2000-01</b>	17 449	11 814	7 689	4 072
<b>1999-00</b>				
March	4 476	2 648	2 436	965
June	4 449	3 001	1 996	984
<b>2000-01</b>				
September	4 360	3 239	1 092	1 056
December	4 319	2 829	2 703	1 031
March	4 549	2 809	2 175	824
June	4 221	2 937	1 719	1 161
<b>2001-02</b>				
September	4 398	3 154	1 096	1 387
December	4 109	2 845	2 444	1 173
March	4 564	2 827	2 135	930

Source: Australian Demographic Statistics (cat. no. 3101.0).

## CIVILIAN LABOUR FORCE STATUS(a)

Period	Employed full-time		Employed part-time		Total employed		Unemployed		Labour force	
	Males	Females	Males	Females	Males	Females	Males	Females	Males	Females
ANNUAL AVERAGE ('000)										
<b>1999-00</b>	322.1	152.5	56.1	142.3	378.2	294.9	34.6	23.9	412.8	318.7
<b>2000-01</b>	322.6	156.7	54.8	143.5	377.4	300.2	32.6	20.2	410.0	320.4
<b>2001-02</b>	319.2	153.2	59.1	153.1	378.4	306.3	31.8	20.0	410.2	326.2
MONTHLY, ORIGINAL ('000)										
<b>2001-02</b>										
August	317.2	150.9	56.2	149.4	373.4	300.3	31.9	20.5	405.3	320.7
September	318.2	158.3	57.3	147.4	375.5	305.7	32.2	20.5	407.6	326.2
October	317.7	154.6	56.9	150.9	374.6	305.5	32.4	18.6	407.1	324.1
November	319.4	159.8	56.2	151.6	375.6	311.4	32.1	16.9	407.6	328.3
December	322.1	158.8	59.6	151.1	381.7	309.9	32.0	20.2	413.8	330.1
January	322.1	151.4	56.9	147.3	379.0	298.8	33.4	22.8	412.4	321.6
February	318.9	152.6	62.4	152.3	381.3	304.9	34.7	22.2	416.0	327.1
March	320.4	147.7	64.0	157.6	384.4	305.3	28.7	21.3	413.1	326.6
April	319.4	147.9	63.5	163.8	382.9	311.6	30.1	18.5	413.0	330.1
May	321.0	152.4	59.8	156.5	380.8	308.9	31.2	19.3	412.0	328.2
June	318.3	147.0	61.9	164.7	380.2	311.7	29.9	19.5	410.1	331.2
<b>2002-03</b>										
July	325.3	149.7	56.8	155.6	382.1	305.3	26.0	18.5	408.1	323.8
August	324.8	150.6	54.8	155.7	379.6	306.3	28.8	20.1	408.4	326.4
September	327.8	154.8	63.3	158.8	391.1	313.5	26.9	21.2	418.0	334.7
October	322.4	155.4	62.2	157.5	384.6	312.9	26.2	18.9	410.8	331.8
MONTHLY, TREND ('000)										
<b>2001-02</b>										
August	316.6	155.3	56.5	147.9	373.1	303.2	33.3	20.6	406.5	323.8
September	317.2	155.5	56.8	147.9	374.0	303.4	32.8	20.3	406.9	323.8
October	317.8	155.6	57.3	148.2	375.1	303.8	32.4	20.1	407.5	323.9
November	318.5	155.1	58.1	149.1	376.6	304.2	32.0	20.1	408.7	324.3
December	319.2	154.2	59.2	150.5	378.4	304.7	31.6	20.1	410.0	324.8
January	319.8	152.9	60.3	152.6	380.1	305.5	31.3	20.1	411.4	325.6
February	320.3	151.6	61.3	155.1	381.6	306.7	31.0	20.0	412.6	326.7
March	320.8	150.7	61.6	157.4	382.4	308.1	30.8	19.8	413.2	327.9
April	321.4	150.2	61.2	159.2	382.6	309.4	30.6	19.5	413.1	328.9
May	322.1	150.4	60.3	159.9	382.4	310.3	30.3	19.4	412.7	329.7
June	322.8	150.8	59.5	159.7	382.3	310.5	29.9	19.5	412.2	330.1
<b>2002-03</b>										
July	323.5	151.3	59.2	158.9	382.7	310.2	29.3	19.9	412.0	330.1
August	324.1	151.9	59.3	157.9	383.4	309.8	28.5	20.2	412.0	330.1
September	324.5	152.5	59.8	157.1	384.3	309.6	27.8	20.6	412.1	330.1
October	324.9	153.1	60.4	156.0	385.3	309.1	26.9	20.9	412.2	330.0

(a) Population aged 15 years and over.

Source: Labour Force, Australia, Preliminary (cat. no. 6202.0).

Period	Civilian population			Unemployment rate			Participation rate		
	Males aged 15 and over	Females aged 15 and over	Persons aged 15-19	Males all ages	Females all ages	Persons all ages	Males	Females	Persons
	'000	'000	%	%	%	%	%	%	%
ANNUAL AVERAGE									
<b>1999-00</b>	587.6	613.8	20.0	8.4	7.5	8.0	70.3	51.9	60.9
<b>2000-01</b>	591.6	616.9	17.9	8.0	6.3	7.2	69.3	51.9	60.4
<b>2001-02</b>	595.4	620.5	18.5	7.8	6.1	7.1	68.9	52.6	60.6
MONTHLY, ORIGINAL									
<b>2001-02</b>									
August	593.9	619.0	17.9	7.9	6.4	7.2	68.2	51.8	59.9
September	594.3	619.4	17.0	7.9	6.3	7.2	68.6	52.7	60.5
October	594.5	619.6	18.9	8.0	5.7	7.0	68.5	52.3	60.2
November	594.8	619.9	16.5	7.9	5.2	6.7	68.5	53.0	60.6
December	595.1	620.1	20.9	7.7	6.1	7.0	69.5	53.2	61.2
January	595.5	620.5	24.4	8.1	7.1	7.7	69.3	51.8	60.4
February	595.9	620.9	19.1	8.3	6.8	7.7	69.8	52.7	61.1
March	596.2	621.3	18.3	6.9	6.5	6.8	69.3	52.6	60.8
April	596.6	621.7	16.3	7.3	5.6	6.5	69.2	53.1	61.0
May	597.0	622.1	17.9	7.6	5.9	6.8	69.0	52.8	60.7
June	597.4	622.5	17.5	7.3	5.9	6.7	68.6	53.2	60.8
<b>2002-03</b>									
July	597.9	623.0	13.0	6.4	5.7	6.1	68.3	52.0	59.9
August	598.4	623.5	16.3	7.0	6.2	6.7	68.2	52.4	60.1
September	598.9	624.0	16.6	6.4	6.3	6.4	69.8	53.6	61.5
October	599.3	624.4	16.3	6.4	5.7	6.1	68.5	53.1	60.7
MONTHLY, TREND									
<b>2001-02</b>									
August	n.a.	n.a.	n.a.	8.2	6.4	7.4	68.4	52.3	60.2
September	n.a.	n.a.	n.a.	8.1	6.3	7.3	68.5	52.3	60.2
October	n.a.	n.a.	n.a.	8.0	6.2	7.2	68.5	52.3	60.2
November	n.a.	n.a.	n.a.	7.8	6.2	7.1	68.7	52.3	60.3
December	n.a.	n.a.	n.a.	7.7	6.2	7.0	68.9	52.4	60.5
January	n.a.	n.a.	n.a.	7.6	6.2	7.0	69.1	52.5	60.6
February	n.a.	n.a.	n.a.	7.5	6.1	6.9	69.3	52.6	60.8
March	n.a.	n.a.	n.a.	7.4	6.0	6.8	69.3	52.8	60.9
April	n.a.	n.a.	n.a.	7.4	5.9	6.7	69.2	52.9	60.9
May	n.a.	n.a.	n.a.	7.3	5.9	6.7	69.1	53.0	60.9
June	n.a.	n.a.	n.a.	7.3	5.9	6.7	69.0	53.0	60.8
<b>2002-03</b>									
July	n.a.	n.a.	n.a.	7.1	6.0	6.6	68.9	53.0	60.8
August	n.a.	n.a.	n.a.	6.9	6.1	6.6	68.8	52.9	60.7
September	n.a.	n.a.	n.a.	6.7	6.2	6.5	68.8	52.9	60.7
October	n.a.	n.a.	n.a.	6.5	6.3	6.4	68.8	52.9	60.7

(a) Population aged 15 years and over.

Source: Labour Force, Australia, Preliminary (cat. no. 6202.0).

Period	Males			Females			Persons		
	Full-time adult ordinary time earnings	Full-time adult total earnings	All males total earnings	Full-time adult ordinary time earnings	Full-time adult total earnings	All females total earnings	Full-time adult ordinary time earnings	Full-time adult total earnings	All employees total earnings
ANNUAL AVERAGE (\$ per week)									
<b>1999-00</b>	756.80	812.50	695.00	641.70	663.30	457.20	714.40	757.50	575.90
<b>2000-01</b>	811.30	864.40	746.80	685.20	703.90	491.20	765.70	806.40	619.70
<b>2001-02</b>	830.20	890.18	775.00	731.10	744.33	505.18	797.18	841.68	643.75
QUARTERLY, ORIGINAL (\$ per week)									
<b>2000-01</b>									
May	824.80	875.00	759.10	698.00	714.20	493.00	780.90	819.30	628.90
<b>2001-02</b>									
August	832.60	875.90	771.20	714.50	727.10	513.00	791.70	824.30	644.50
November	827.80	884.90	772.10	733.00	745.80	506.00	796.10	838.40	641.40
February	831.00	900.50	773.20	741.80	754.60	497.90	801.50	852.20	639.20
May	829.40	899.40	783.50	735.10	749.80	503.80	799.40	851.80	649.90
<b>2002-03</b>									
August	829.90	877.40	765.50	757.20	770.30	543.20	805.50	841.40	661.80
QUARTERLY, TREND (\$ per week)									
<b>2000-01</b>									
May	825.60	875.30	763.70	702.90	717.70	502.10	782.40	819.70	634.70
<b>2001-02</b>									
August	828.70	879.10	768.40	716.90	730.30	505.50	790.10	827.80	639.50
November	830.30	887.10	772.30	728.20	740.90	502.60	796.10	838.30	640.50
February	830.00	893.90	774.60	736.60	750.10	503.70	799.50	846.80	643.00
May	830.40	895.10	776.30	745.20	758.90	513.40	802.60	850.50	650.30
<b>2002-03</b>									
August	830.70	891.20	776.70	754.70	768.20	530.00	805.50	850.50	660.90

Source: Average Weekly Earnings, States and Australia (cat. no. 6302.0).

## 22

### SECURED HOUSING FINANCE COMMITMENTS(a)

Period	Original		Seasonally adjusted		Trend	
	Dwelling units	Value	Dwelling units	Value	Dwelling units	Value
	no.	\$m	no.	\$m	no.	\$m
<b>2001-02</b>						
July	4 290	462	4 308	469	4 255	457
August	4 324	455	4 326	457	4 304	464
September	3 849	414	4 280	465	4 310	471
October	4 334	473	4 237	469	4 323	476
November	4 695	525	4 331	480	4 319	479
December	4 423	508	4 386	492	4 297	480
January	3 892	444	4 346	487	4 269	479
February	4 008	455	4 201	467	4 264	477
March	4 246	478	4 226	477	4 299	477
April	4 112	458	4 151	461	4 363	480
May	4 880	525	4 508	486	4 435	486
June	4 681	498	4 671	511	4 486	494
<b>2002-03</b>						
July	4 988	524	4 711	502	4 500	500
August	4 166	476	4 367	508	4 481	505
September	3 840	458	4 187	497	4 439	507

(a) Excludes alterations and additions. Includes refinancing.

Source: Housing Finance for Owner Occupation, Australia (cat. no. 5609.0).

## 23

### FINANCE COMMITMENTS

Period	Commercial finance commitments			Personal finance commitments			
	Fixed loan facilities	Revolving credit facilities	Total commercial finance commitments	Fixed loan facilities	Revolving credit facilities	Total personal finance commitments	Total lease finance commitments
	\$m	\$m	\$m	\$m	\$m	\$m	\$m
<b>2001-02</b>							
July	373.9	260.2	634.1	150.7	169.7	320.4	28.7
August	374.2	220.1	594.3	165.4	143.6	308.9	15.6
September	293.2	222.3	515.5	136.5	127.2	263.7	13.5
October	412.6	295.7	708.3	162.4	145.4	307.8	14.9
November	551.8	295.1	846.9	180.6	178.5	359.1	25.6
December	611.8	290.5	902.3	165.9	147.2	313.0	16.2
January	338.8	228.3	567.1	164.2	119.9	284.1	10.9
February	422.8	288.2	711.0	176.3	134.7	310.9	13.9
March	545.5	235.5	781.0	176.3	145.9	322.3	14.6
April	476.6	226.0	702.6	169.8	151.7	321.5	13.3
May	457.3	220.1	677.4	193.8	158.7	352.5	16.3
June	595.1	370.9	966.0	188.7	187.9	376.6	17.3
<b>2002-03</b>							
July	593.0	413.3	1 006.3	198.3	180.2	378.5	15.2
August	524.5	484.1	1 008.5	195.7	195.3	391.0	12.3
September	525.8	433.9	959.7	179.3	150.2	329.5	13.3

Source: ABS data available on request.



## PUBLICATIONS SOURCE INDEX

- (1) *Australian National Accounts: National Income, Expenditure and Product*, cat. no. 5206.0—and ABS data available on request
- (2) International Merchandise Trade, ABS data available on request
- (3) *Retail Trade, Australia*, cat. no. 8501.0, Monthly
- (4) *Sales of New Motor Vehicles, Australia*, cat. no. 9314.0.55.001 Monthly
- (5) *Private New Capital Expenditure, Australia*, cat. no. 5625.0, Quarterly—and Ausstats data
- (6) *Tourist Accommodation, Australia*, cat. no. 8635.0, Quarterly
- (7) *Building Approvals, Australia*, cat. no. 8731.0, Monthly
- (8) *Building Activity, Australia*, cat. no. 8752.0, Quarterly
- (9) *Engineering Construction Activity, Australia*, cat. no. 8762.0, Quarterly
- (10) *Manufacturing Production, Australia, Preliminary*, cat. no. 8301.0, Quarterly
- (11) *Livestock Products, Australia*, cat. no. 7215.0, Quarterly—and ABS data available on request
- (12) *Actual and Expected Private Mineral Exploration, Australia*, cat. no. 8412.0, Quarterly
- (13) *Consumer Price Index*, cat. no. 6401.0, Quarterly
- (14) *Producer Price Indexes, Australia*, cat. no. 6427.0, Quarterly
- (16) *House Price Indexes: Eight Capital Cities*, cat. no. 6416.0, Quarterly
- (17) *Australian Demographic Statistics*, cat. no. 3101.0, Quarterly
- (18) *Labour Force, Australia, Preliminary*, cat. no. 6202.0, Monthly
- (19) *Job Vacancies, Australia*, cat. no. 6354.0, Quarterly
- (20) *Industrial Disputes, Australia*, cat. no. 6321.0, Monthly
- (21) *Average Weekly Earnings, States and Australia*, cat. no. 6302.0, Quarterly
- (22) *Wage Cost Index, Australia*, cat. no. 6345.0, Quarterly
- (23) *Housing Finance for Owner Occupation, Australia*, cat. no. 5609.0, Monthly
- (24) *Lending Finance, Australia*, cat. no. 5671.0, Monthly—and ABS data available on request
- (25) *Reserve Bank of Australia Bulletin*





## FOR MORE INFORMATION...

- INTERNET* **www.abs.gov.au** the ABS web site is the best place to start for access to summary data from our latest publications, information about the ABS, advice about upcoming releases, our catalogue, and Australia Now—a statistical profile.
- LIBRARY* A range of ABS publications is available from public and tertiary libraries Australia-wide. Contact your nearest library to determine whether it has the ABS statistics you require, or visit our web site for a list of libraries.
- CPI INFOLINE* For current and historical Consumer Price Index data, call 1902 981 074 (call cost 77c per minute).
- DIAL-A-STATISTIC* For the latest figures for National Accounts, Balance of Payments, Labour Force, Average Weekly Earnings, Estimated Resident Population and the Consumer Price Index call 1900 986 400 (call cost 77c per minute).

## INFORMATION SERVICE

Data which have been published and can be provided within five minutes are free of charge. Our information consultants can also help you to access the full range of ABS information—ABS user-pays services can be tailored to your needs, time frame and budget. Publications may be purchased. Specialists are on hand to help you with analytical or methodological advice.

- PHONE* **1300 135 070**
- EMAIL* **client.services@abs.gov.au**
- FAX* 1300 135 211
- POST* Client Services, ABS, GPO Box 796, Sydney 2001

## WHY NOT SUBSCRIBE?

ABS subscription services provide regular, convenient and prompt deliveries of ABS publications and products as they are released. Email delivery of monthly and quarterly publications is available.

- PHONE* 1300 366 323
- EMAIL* subscriptions@abs.gov.au
- FAX* 03 9615 7848
- POST* Subscription Services, ABS, GPO Box 2796Y, Melbourne 3001



2130740012020  
ISSN 1039-8880

RRP \$20.00